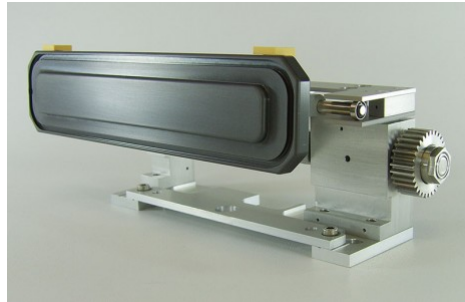


## 853-001198-001 AutoEtch Outer Gate Assembly

### Features

- Brand New Gates Available
- Exchange & Refurbishing Services Available
- New Anodized Door
- New Gate Stops
- New Screws
- New Bearings
- New Bushings
- New Shims
- New Spring
- New Sprocket
- New Compression Fitting
- New Mounting Hub
- New Clevis
- New Roll Pins
- Full Functionality Tested



#### [View Product](#)

The AutoEtch Gate assembly is a precision mechanical isolation barrier between atmosphere/load locks & the main chamber of the AutoEtch. It is designed for repeatable precision wafer processing and will function flawlessly for thousands of cycles depending on process chemistry. **Applications Include:** All Lam Research Standalone AutoEtch 490, 590, 690 & 790 Platforms.

SemiGroup offers a complete array of options and expertise when supplying Plasma Etch Equipment to our clients. We also provide Total Refurbishment Services for your existing Plasma Etch Equipment. We will refurbish all assemblies, clean and re-range all your Mass Flow Controllers, recondition all chambers and load locks, replace all o-rings and seals to return the equipment to original OEM Specifications. Your machine will go through a rigorous Plasma "On" Wafer Marathon to ensure complete functionality before we ship your tool. Any required peripheral equipment will now also be fully checked out (Pumps, Chillers, RF Carts, Cabling etc) before being shipped.

Finally, Semigroup will Startup and Install your newly refurbished etcher completing our "Turn-Key" Premium Client Service. We also have our own line of consumable parts we will supply with your newly refurbished tool.